

# Automated two step purification of 6xHis-tagged GFP

Ulrike Maschke, Yannick Krauke, Kate Monks; applications@knauer.net  
KNAUER Wissenschaftliche Geräte GmbH, Hegauer Weg 38, 14163 Berlin; www.knauer.net

## SUMMARY

Affinity chromatography by His-tag is one of the most widespread purification techniques for recombinant proteins. In most cases it requires an additional cleaning/polishing step. This application highlights the possibility of combining two subsequent chromatography protocols without manual interaction using the AZURA® Bio purification system.

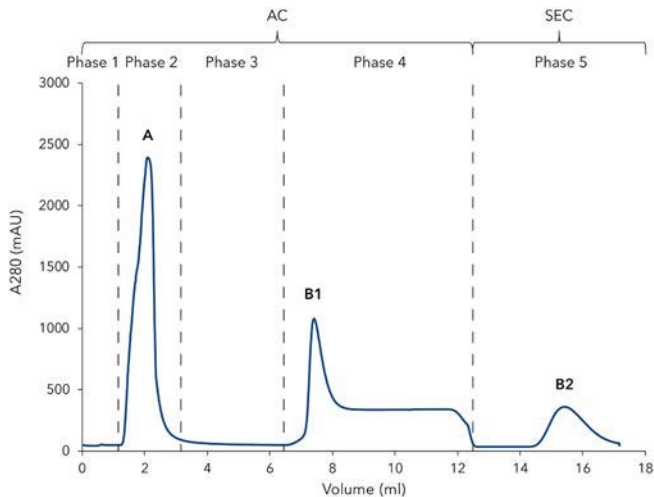


## INTRODUCTION

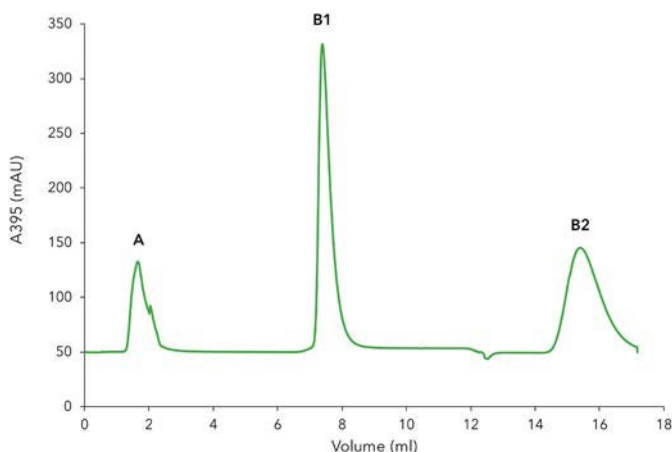
Affinity chromatography (AC) is one of the most efficient techniques to purify recombinant proteins. Mostly, AC is performed on crude samples like bacterial lysates containing the recombinant protein that is genetically engineered to be expressed with a tag that enables the specific capture of the recombinant protein. These highly efficient tags are used for affinity binding to specific affinity chromatography materials. A variety of tags is available among which the polyhistidine tag is the most widespread one. In this application, six histidine (6xHis) residues were attached to the green fluorescent protein (GFP). The histidine residues bind with very high

affinity to the immobilized metal ions on the column (immobilized metal ion affinity chromatography (IMAC)). In many protocols, an additional step is recommended to reach higher purity or to change the buffer of the purified protein to a suitable storage buffer. Here, size exclusion chromatography was used as second step to exchange the buffer of the purified protein. Purification of recombinant proteins can be performed manually or by using a chromatography system combining two steps automatically to save time and effort.

# Automated two-step purification of 6xHis-tagged GFP



**Fig. 1** Chromatogram of the two-step 6xHis-GFP purification; 280 nm UV signal, Step1) Affinity chromatography (AC)/ Ni- NTA column: 1) Column equilibration; 2) Sample injection; 3) Column washing; 4) Elution of 6xHis-GFP and parking in 1 mL sample loop; Step2) Buffer exchange with desalting co-lumn: 5) Elution of 6xHisGFP ; A) flow through of unbound protein; B1) elution peak of 6xHis-GFP from Ni-NTA column; B2) elution peak of 6xHis-GFP



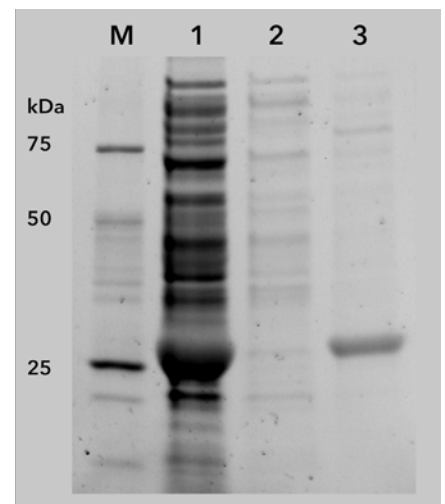
**Fig. 2** Chromatogram of the two-step 6xHis-GFP, GFP detection with 395 nm UV signal, A) flow through of unbound pro-tein; B1) elution peak of 6 x His-GFP from Ni - NTA column; B2) elution peak of 6 x His-GFP

## RESULTS

The chromatogram of the 6xHis-GFP purification shows the five phases of the two-step protocol (**Fig. 1**). After equilibration (**Fig. 1**, phase 1) the lysate was injected and the GFP bound to the Ni-NTA affinity column via the 6xHis-tag. All other non-binding proteins and impurities are in the large flow through peak (**Fig. 1**, phase 2, peak A). Subsequently, the column was washed until the baseline was stable (**Fig. 1**, phase 3). The eluted protein (**Fig. 1**, phase 4, peak B1) was collected in a sample loop and re-injected on the desalting column (**Fig. 1**, phase 5) to exchange the buffer from high imidazole concentrations to a buffer without imidazole. The purified protein (**Fig. 1**, peak B2) was collected by the fraction collector.

Additionally to the unspecific photometrical detection of all proteins at 280 nm, GFP-signal was recorded at 395 nm (**Fig. 2**) with the multi-wavelength detector. Most of the 6xHis-tagged GFP bound to the column as only a small peak for GFP is visible in the flow through. The purification results were confirmed by SDS-Page (**Fig. 3**). The cell lysate (**Fig. 3**, lane 1) shows a prominent band representing the overexpressed 6xHis GFP. This band is cleared in the flow through (**Fig. 3**, lane 2), confirming that most of the tagged protein bound to the column. The eluted sample (**Fig. 3**, lane 3) shows the purified 27 kDa 6xHis-GFP with only minor contaminations.

**Fig. 3** SDS-PAGE of two-step 6xHis-GFP purification M - marker, 1) lysate before purification, 2) flow th-rough, 3) eluted 6xHis-GFP (27 kDa) after two-step purification

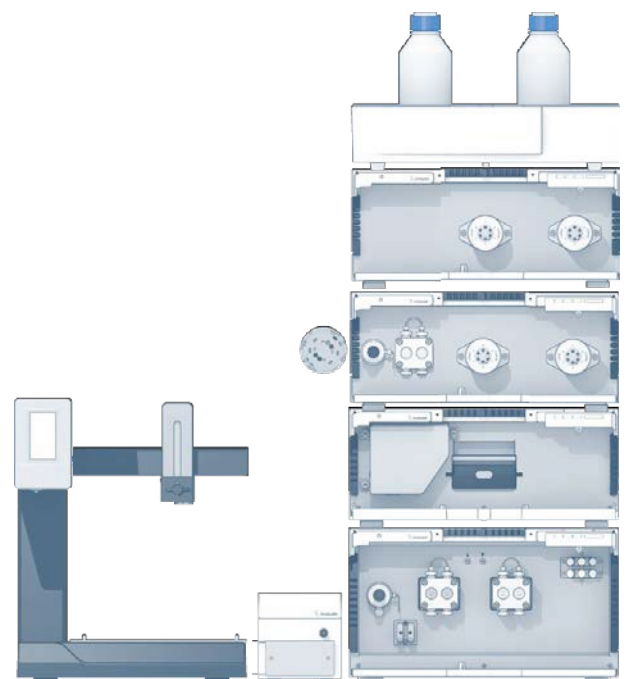


## MATERIALS AND METHODS

The AZURA two-step purification system with a multi-wavelength detector was used for this application. It consists of AZURA P 6.1L HPG, one autosampler AZURA ASM 2.1L with feed pump and two 6 port/3 channel injection valves; a second ASM 2.1L with two 6 port/3 channel injection valves; the MWD 2.1L multiwavelength detector, a column switching valve, a conductivity monitor, and a fraction collector. The Sepapure FF Ni-NTA 1 mL column was equilibrated prior to the run with 15 mL load/wash buffer (PBS pH 7.5, 10 mM imidazole) at 1 mL/min. 100  $\mu$ L lysate containing the 6 x His tagged GFP was loaded on to the column at a flowrate of 0.3 mL/min. The column was washed with 4 mL load/wash buffer at a flowrate of 1 mL/min. The load/wash buffer had a low amount of imidazole to reduce non-specific binding of impurities. 6 x His tagged GFP was eluted with 5 mL elution buffer (PBS, pH 7.5, 500 mM imidazole) and collected in a 1 mL sample loop. The eluted protein was re-injected on to a 5 mL desalting column to exchange the buffer from high imidazole concentrations from the elution buffer to the final desalting buffer without imidazole. 7 mL desalting buffer (PBS pH 7.4) was used for the gel filtration run at a flowrate of 1 mL/min. The protein was collected in a fraction collector. The UV signal at 280 nm and 395 nm, as well as the conductivity signal were recorded.

## CONCLUSION

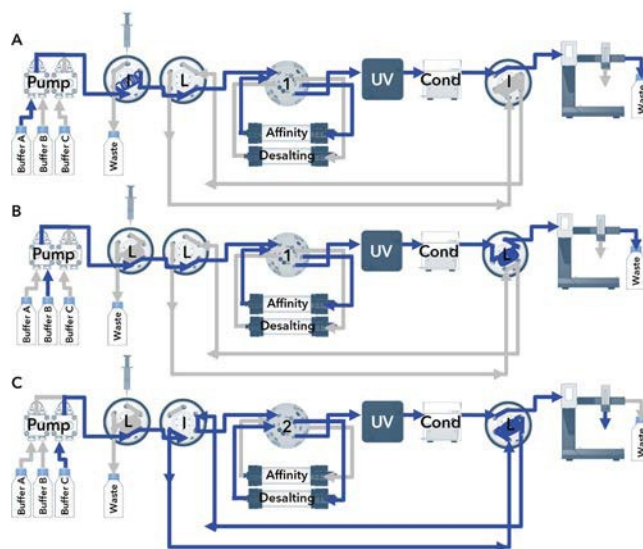
6xHis-tagged GFP was purified by an automated twostep protocol combining an affinity chromatography method to capture 6xHis-tagged GFP with a subsequent buffer exchange step by size exclusion chromatography. This automatization requires no time consuming manual interaction. The method set up is an excellent example for a two-step protein purification and can be adapted to a variety of protein purification protocols. The benefit of an multi wavelength detector was shown measuring at two different wavelengths.



## ADDITIONAL MATERIALS AND METHODS

**Tab.A1** Method parameters

Eluent A	Loading/washing buffer: PBS (phosphate-buffered saline) pH 7.5, 10 mM imidazole		
Eluent B	Elution buffer: PBS pH 7.5, 500 mM imidazole		
Eluent C	Desalting buffer: PBS pH 7.4		
Gradient	Volume [mL]	% A	% B
	0-0.5	100	0
	0.5-2	100	0
	2-6	70	30
	6-11	0	100
	11-18	0	100
Flow rate	1 mL/min	System pressure 1.0 bar	
Column temperature	RT	Run time	18 min
Injection volume	100 µL	Injection mode	Full loop
Detection wavelength	280 nm 395 nm	Data rate	
		Time constant	500 ms



**Fig.A1** Flowchart; A) sample injection, B) elution and peak parking, C) reinjection

**Tab.A2** System configuration

Instrument	Description	Article No.
Pump	AZURA P 6.1L HPG, ceramic, 50 mL	<a href="#">APH68FB</a>
Detector	MWD 2.1L	<a href="#">ADB01</a>
Flow cell	10 mm, 1/16", 10 µL, 300 bar, biocompatible	<a href="#">AMC38</a>
Assistant 1	AZURA ASM 2.1L Left: feed pump 50 ml Ti Middle: Injection valve 6/3 channel PEEK Right: injection valve 6/3 channel PEEK	<a href="#">AYBHECEC</a>
Assistant 2	Left position: - Injection valve 6/3 channel PEEK Right position: injection valve 6/3 channel PEEK	
Conductivity monitor	AZURA CM 2.1S	<a href="#">ADG30</a>
Flow cell	Preparative, flow rates up to 100 mL	<a href="#">A4157</a>
Valve	Column selection valve	<a href="#">AWB00FC</a>
Column	Sepapure FF Ni-NTA 1 mL Sepapure Desalting 5 mL	<a href="#">010X39FPSZ</a> <a href="#">020X460SPZ</a>
Fraction collector	Foxy R1	<a href="#">A59100</a>
Software	PurityChrom® 5 Upgrade	

## RELATED KNAUER APPLICATIONS

**VBS0063** - Automated two - step purification of mouse antibody IgG1 with AZURA Bio purification system

**VBS0064** - Comparison of IgG purification by two different protein A media

**VBS0068** - Fast and robust purification of antibodies from human serum with a new monolithic protein A column

**VBS0066** - Fast and sensitive size exclusion chromatography of IgG antibody

**VBS0069** - Purification of Sulphydryl Oxidase