

Determination of aflatoxins in cereal baby food samples - from extraction to high efficient detection



Kristin Folmert, Kate Monks; applications@knauer.net

KNAUER Wissenschaftliche Geräte GmbH, Hegauer Weg 38, 14163 Berlin; www.knauer.net

In Kooperation mit Macherey Nagel, LCTech GmbH

SUMMARY

Cultivation, drying and storage of cereals may contribute to the spread of molds, which produce mycotoxins – toxic secondary metabolites. Their consumption can lead to serious health damage. So it is inevitable to provide a simple, robust and exact method for the analysis of mycotoxins in food, especially the most often occurring aflatoxins to ensure consumer safety. In this application note the sample extraction for processed cereals in baby food products as preparation for a highly sensitive HPLC method is described.

INTRODUCTION

Aflatoxins are the best known group of mycotoxins produced as secondary metabolites by fungi, mainly by *Aspergillus flavus* and *Aspergillus parasiticus*, but to a smaller extent also by other strains¹. Aflatoxins can be produced on cereals in the field or during storage, especially under warm conditions and high humidity. Aflatoxins are stable compounds that are not destroyed during food processing like cooking or baking. That is why they also can be present in derived products such as processed cereal-based foods and baby foods for infants and young children. During the first several months of life, at the age of 4 to 6 months, infants require the gradual replacement of breast milk with infant cereal products, which are frequently the first solid meal used in infant feeding. Infants are more susceptible to aflatoxins and other mycotoxins. Due to their rapid growth rate, liver

damage and other toxic influences are more critical than for adults. In addition, infants have increased vulnerability to contaminants than adults due to their lower body weight, reduced ability to detoxify hazardous agents and a more restricted diet². Most baby foods for infants and young children are multi-cereal, as many different grains are used as ingredients, so increasing the probability of aflatoxin contamination. Although many aflatoxins exist, only a limited number is important in analytical practice. Aflatoxin B1 is most widespread and can be found in food and feed products such as peanuts, pistachios, corn and cottonseed, dried fruits and all processed products. It is highly toxic and the WHO classified it as a group 1 carcinogen³. The aflatoxins B2, G1 and G2 are usually found accompanying B1, in lower concentrations in the contaminated samples (Fig. 1).

Determination of aflatoxins in cereal baby food samples - from extraction to high efficient detection

INTRODUCTION

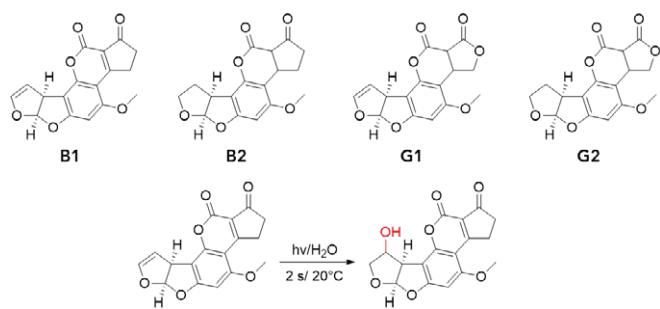


Fig. 1 Chemical structures of the four aflatoxins and the reaction mechanism of the photochemical activation.

Governmental institutions and health protection agencies like FDA, WHO and European Commission apply these methods on a large scale to control marketed food products and animal feed^{3,4,5}. Additionally, the presence of aflatoxins B1, B2, G1 and G2 in a variety of processed and unprocessed foods is controlled in countries around the world. The lowest maximum aflatoxin level of 0.1 µg/kg for processed cereal-based foods and all kinds of dietary foods for special medical purpose, both for babies, infants and young children are set by the European Commission according to regulation EG 1881/2006⁶. From 2013 to 2018 the Rapid Alert System for Food and Feed of the European Commission (RASFF) registered 44 notifications for aflatoxins in cereals and bakery products and two in

baby food⁷. The alerts affecting baby foods were notified by Switzerland (aflatoxin B1 at 0.18 µg/kg) and the Netherlands (aflatoxin B1 from 0.21 to 0.39 µg/kg)². The required verification method is HPLC with fluorescence detection and preliminary sample extraction. Unfortunately, aflatoxins B1 and G1 show only minimal fluorescence and are thus difficult to detect. Irradiating the aflatoxins mixture with UV light of 254 nm, the aflatoxins B1 and G1 undergo photo-induced hydroxylation and can then be measured through fluorescence spectrometry more sensitively. The dedicated AZURA® Aflatoxin system consists of a fluorescence detector with coupled photochemical post column derivatization module. The photochemical post column derivatization enables a non-toxic and fast derivatization at room temperature. In comparison to previous methods, using saturated iodine reactions coils or with electrochemical generated bromine in a KOBRA cell, no toxic halogenic reagents were used for derivatization. Thus, no halogenic solvent waste was produced. The complete analytical method, including recovery, standard deviation and robustness evaluation, is described in AppNote VFD0178⁸. The sample preparation for the analytical method described in this AppNote is suitable to reduce intensive matrix effects to enable a highly reproducible and sensitive quantification of the aflatoxins.

RESULTS

The sample preparation for the analytical aflatoxin analysis is based on three different extraction steps. During the first solid-liquid extraction aflatoxins can be extracted together with many other soluble compounds, removing most of the solid material. During the liquid-liquid extraction most fatty and hydrophobic compounds could be removed. Most of the resulting matrix peaks, especially in the critical time between 6.5 and 8 minutes, where the aflatoxins can be detected, could be removed during SPE extraction (**Fig. 2**). Two of the resulting peaks with higher fluorescence intensity up to 250 counts correspond to the solvents chloroform ($t_R = 2.0$ min) and acetone ($t_R = 3.8$ min). With almost all matrix peaks removed, a highly sensitive and robust aflatoxin analysis can be assured.

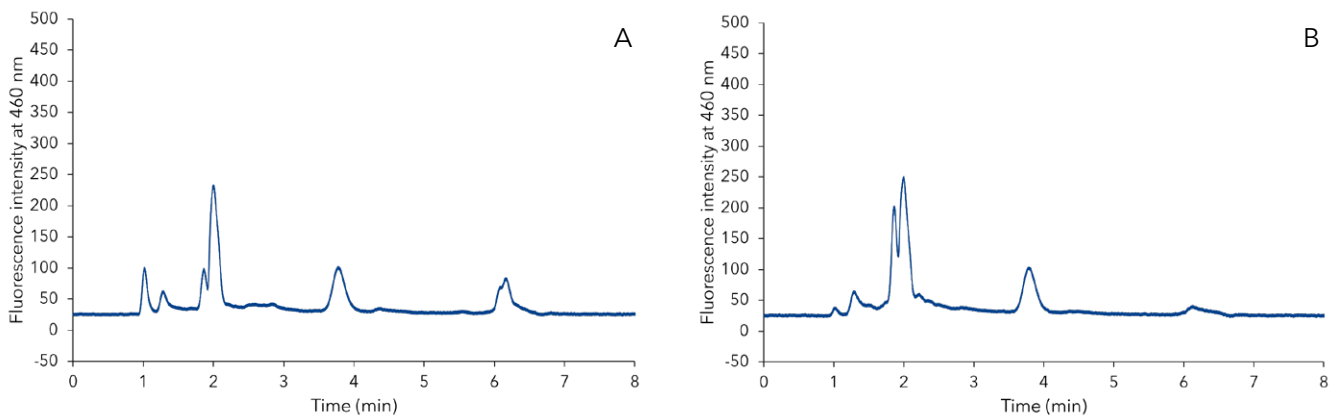


Fig. 2 Two different chromatograms of cereal containing baby food extraction samples without aflatoxins. The extract of baby puree on the left (A) and the extract of baby rusk on the right site (B).

In **Fig. 3** a various mixture of different food sample extractions spiked with 20 ng/mL of the aflatoxins B1/G1 and 6 ng/mL B2/G2 was analyzed (blue). The determined limits of detection (LOD) were 0.05 ng/mL for aflatoxins B1/G1 and 0.015 ng/mL for B2/G2 (**Fig. 3**, red). These values are 3.4 and 11.3 times lower than requested from the European Commission⁶.

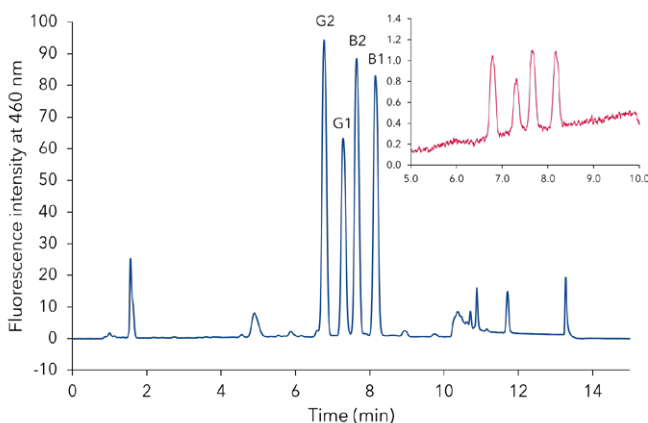


Fig. 3 Chromatogram of a mixture including equal parts of extraction products from peanuts, pistachios, cereal puree for babies and dried fruits (cherries, cranberries, raisins, aronia and plums) spiked with 20 ng/mL of the aflatoxins B1/G1 and 6 ng/mL B2/G2 (blue). Zoom into a chromatogram of a standard mixture of the four aflatoxins at the LOQ (red).

Determination of aflatoxins in cereal baby food samples - from extraction to high efficient detection

SAMPLE PREPARATIONS

For sample preparation 50 g of commercially available baby rusk were grinded to a fine powder before suspending it with 20 mL MeOH:H₂O (17:3, v/v) for 30 minutes. Cereal baby puree was directly suspended with 20 mL MeOH:H₂O (17:3, v/v). The suspension was filtered and 40 mL of the extract were filled into an extraction funnel. The extract was degreased two times with 25 mL *n*-hexane and the aqueous phase was extracted two times with 25 mL chloroform. The organic extract was evaporated to 3 mL before SPE extraction. The SPE cartridges were provided by Macherey Nagel and filled with 3 mL SiOH with a specific loading capacity of 500 mg. The SPE cartridge was conditioned with 3 mL *n*-hexane followed by 3 mL

chloroform before the extract was added. The bounded compounds from the extract, including the aflatoxins, were washed with *n*-hexane, diethyl ether and chloroform, 3 mL each. After washing, the collecting template was changed and the bounded compounds were removed by rinsing the SPE cartridge with 6 mL chloroform:acetone (9:1, v/v). The final extract was stored in a gas tight glass flask. The sample preparation was performed in three identical replicates to evaluate the reproducibility of the method. During sample preparation an analytical sample was collected after the extraction with MeOH/H₂O, before and after the SPE extraction to verify the success of the extraction step.

CONCLUSION

The described sample preparation for the extraction of aflatoxins from cereal based baby food products can be used for all kind of food and animal feed which could be affected by aflatoxins. Analytical control samples after every extraction step could verify that the sample preparation is very efficient for the reduction of matrix peaks. Additionally, using the UVE photochemical reactor for post column derivatization in combination with the AZURA Analytical HPLC system and Eurospher II C18 column, it was possible to detect the four aflatoxins B1, B2, G1 and G2 in one chromatographic run of a spiked sample with the very low LOD of 0.05 ng/mL for B1/G1 and 0.015 ng/mL for B2/G2.

MATERIALS AND METHODS

Tab. 1 Instrument setup

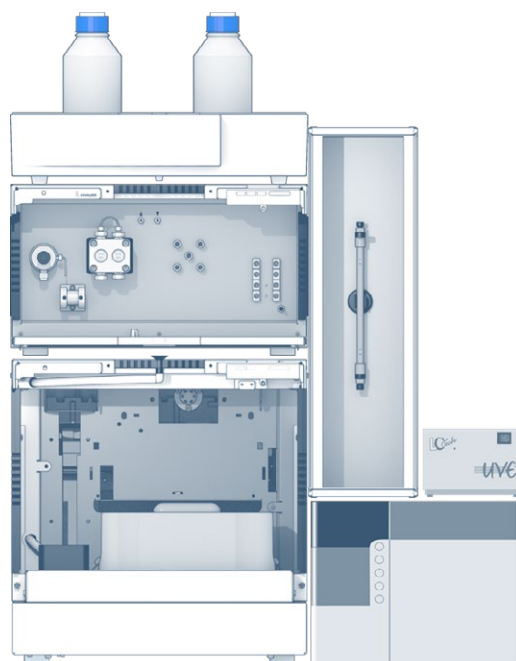
Column temperature	60 °C	Time constant	0.2 s
Injection volume	10 µL	Excitation	365 nm
Injection mode	Full Loop	Emission	460 nm
Detection	FLD	Post column derivatization	254 nm
Data rate	50 Hz	Flow rate	2.4 mL/min

Tab. 2 Pump program

Time (min)	Water (%)	ACN (%)	MeOH (%)
0.0	83	5	12
0.5	83	5	12
9.0	54	34	12
9.1	0	100	0
12.0	0	100	0
12.1	83	5	12
15.0	83	5	12

Tab. 3 System configuration

Instrument	Description	Article No.
Pump	AZURA P6.1L, LPG	APH34EA
Autosampler	AZURA AS 6.1L	AAA00AA
Fluorescence detector	RF-20A	A59200
Thermostat	AZURA CT 2.1	A05852
Column	Eurospher II 100-3 C18, 150 x 4.6 mm ID	15EE181E2G
Post column derivatization	UVE Box, 50 Hz	A07547
Interface box	IFU 2.1 Lan	AZB00XA
Software	ClarityChrom 8.1	A1670



REFERENCES

- [1] Hedayati, M. T., Pasqualotto, A. C., Bowyer P., Denning, D. W. *Aspergillus flavus*: human pathogen, allergen and mycotoxin producer. *Microbiology* 153 (6), 1677-1692 (2007).
- [2] Herrera, M., Bervis, N., Carramiñana, J. J., Juan, T., Herrera, A., Ariño, A., Lorán, S. Occurrence and exposure assessment of aflatoxins and deoxynivalenol in cereal-based baby foods for infants. *Toxins* 11 (3) 150 (2019).
- [3] World Health Organization (WHO) Aflatoxins. Food safety digest, Department of food safety and zoonoses. Ref. No.: WHO/NHM/FOS/RAM/18.1 (2018).
- [4] U.S. Department of Health and Human Services, Food and Drug Administration (FDA) Action levels for aflatoxins in animal food. CPG Sec. 683.100 (2019).
- [5] The European Commission, Commission Regulation (EC) No 401/2006 of 23 February 2006 laying down the methods of sampling and analysis for the official control of the levels of mycotoxins in foodstuffs (2016).
- [6] The European Commission, Commission Regulation (EC) No 1881/2006 of 19 December 2006 setting maximum levels for certain contaminants in foodstuffs (2006).
- [7] Rapid Alert System for Food and Feed (RASFF), accessed on 31 January 2019, <<https://webgate.ec.europa.eu/rasff-window/portal/>>.
- [8] Folmert, K., Margraf, M., Monks, K. Quick and easy determination of aflatoxins in food matrices with photochemical post-column derivatization. KNAUER, AppNote VFD0178, 1-4 (2019).

RELATED KNAUER APPLICATIONS

- VFD0152** - Determination of Aflatoxin M1 in milk
- VFD0175** - Verification of the mycotoxin patulin from apple juice with isocratic HPLC
- VFD0178** - Quick and easy determination of aflatoxins in food matrices with photochemical post column derivatization
- VFD0179** - Determination of aflatoxines in peanut samples - from extraction to high efficient detection
- VFD0180** - Determination of aflatoxines in pistachio samples - from extraction to high efficient detection
- VFD0181** - Determination of aflatoxines in dried fruits - from extraction to high efficient detection