



## LAUNCH MANAGER

Clarity Software

ENG

Code/Rev.: M138/80B  
Date: 4/1/2019

Phone: +420 251 013 400  
Fax: +420 251 013 401  
clarity@dataapex.com  
www.dataapex.com

DataApex Ltd.  
Petrzilkova 2583/13  
158 00 Prague 5  
The Czech Republic

Clarity<sup>®</sup>, DataApex<sup>®</sup> and ▲<sup>®</sup> are trademarks of DataApex Ltd. Microsoft<sup>®</sup> and Windows<sup>™</sup> are trademarks of Microsoft Corporation.

*DataApex reserves the right to make changes to manuals without prior notice. Updated manuals can be downloaded from [www.dataapex.com](http://www.dataapex.com).*

Author: JK

# Contents

<b>1 Launch Manager</b> .....	<b>1</b>
<b>2 Using the Launch Manager</b> .....	<b>2</b>
2.1 Select Clarity Profile .....	2
2.2 Edit Profiles .....	3
2.2.1 Configuration Details .....	7
<b>3 Examples of using the Launch Manager</b> .....	<b>8</b>
<b>4 Clarity configuration files</b> .....	<b>9</b>

To facilitate the orientation in the **Launch Manager** manual and **Clarity** chromatography station, different fonts are used throughout the manual. Meanings of these fonts are:

**Instrument** (blue text) marks the name of the window to which the text refers.

*Open File* (italics) describes the commands and names of fields in **Clarity**, parameters that can be entered into them or a window or dialog name (when you already are in the topic describing the window).

WORK1 (capitals) indicates the name of the file and/or directory.

*ACTIVE* (capital italics) marks the state of the station or its part.

The bold text is sometimes also used for important parts of the text and the name of the **Clarity** station. Moreover, some sections are written in format other than normal text. These sections are formatted as follows:

---

**Note:** Notifies the reader of relevant information.

---

**Caution:** Warns the user of possibly dangerous or very important information.

---

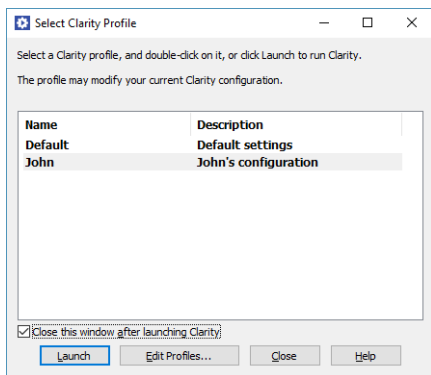
**Marks the problem statement or trouble question.**

**Description:** Presents more detailed information on the problem, describes its causes, etc.

**Solution:** Marks the response to the question, presents a procedure how to remove it.

# 1 Launch Manager

This text describes the use of **Launch Manager** included in **Clarity** Software ver. **2.8 and later**.



*Fig 1: Launch Manager*

**Launch Manager** enables you to start the **Clarity** Chromatography Station in variable configurations including predefined instruments and its projects, methods or sequences. If you don't need to use more than four instruments simultaneously, but you need more than four instruments prepared for different methods or users, then this utility is for you. You can find examples of how to use this utility in the chapter "**Examples of using the Launch Manager**" on pg 8.

## 2 Using the Launch Manager

Start **Launch Manager** by clicking on its shortcut in the Windows *Start - Programs - Clarity* menu (default installation). Depending on the version of **Clarity**, you can have some profiles predefined in the Launcher. If so, double-clicking on the *Profile Name* or the **OK** button will start the **Clarity** Chromatography Station with the predefined configuration.

### 2.1 Select Clarity Profile

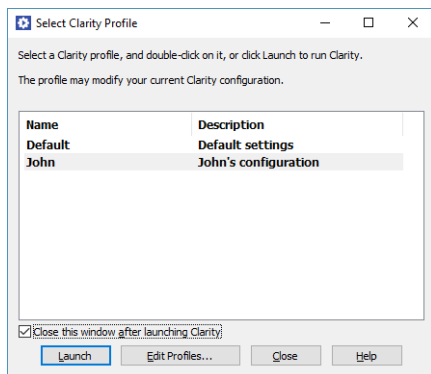


Fig 2: Select Clarity Profile

**Select Clarity Profile** is the initial window of **Launch Manager**. Depending on your **Clarity** version, you can have various sets of profiles predefined. Select one of the profiles and click the *Launch* button to start the **Clarity** Station.

#### **Close this window after launching Clarity**

If checked, **Launch Manager** closes after you launch **Clarity**.

#### **Launch**

Starts the **Clarity** Station with predefined configuration profile.

#### **Edit profiles...**

Opens the **Edit Profiles** dialog where you can edit existing profiles or create new ones.

#### **Close**

Closes **Launch Manager** without any action.

## 2.2 Edit Profiles

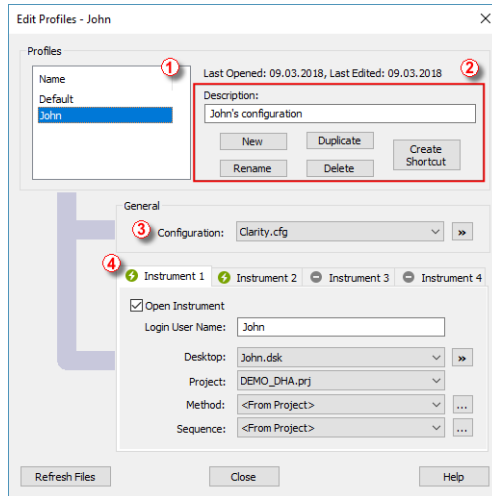


Fig 3: Editing the profiles

### Profiles ①

List of created profiles.

### Last Opened

Displays the last date of starting **Clarity** using **Launch Manager**.

### Last Edited

Displays the last date of editing the profile in **Launch Manager**.

### Description ②

Sets the description of a profile that will be visible in the **Select Clarity Profile** dialog.

### New

Displays the **Enter New Profile Name** dialog, in which you can type a profile name of the created profile.

### Duplicate

Displays the **Enter New Profile Name** dialog, in which you can type a new name of the duplicated profile.

### Delete

Deletes the selected profile.

### Create Shortcut

Displays the **Save As** dialog in which you can select the destination of the created shortcut. The shortcut enables you to start **Clarity** with the selected profile without opening **Launch Manager**.

### Configuration ③

Sets which **Clarity** Configuration (the \*.CFG file) is loaded after the start of **Clarity**. The list of configuration files is retrieved from the **Clarity** installation directory (C:\CLARITY\CFG by default).

See the chapter "**Clarity configuration files**" on pg 9. for detailed specification which **Clarity** files is **Launch Manager** using.

#### <Last Used>

Set this option, if you want to start **Clarity** with the last configuration it was opened.

This option is useful in combination with the *Open Instrument* option when both are set. Then you can start a **Clarity** profile from **Launch Manager** without closing **Clarity**. Running **Clarity** instance will be preserved and Instruments which are set as open in the profile will be opened with settings defined in **Launch Manager**.

#### ☒ button

Displays the popup menu for operations with the configuration files. You can also access this popup menu by right clicking on the *Configuration* combo box.

#### Add

Displays the [Open](#) dialog in which you can select the appropriate **Clarity** Configuration (the .CFG file) you want to load after the start of **Clarity**.

#### Duplicate

Displays the [New Configuration Name](#) dialog in which you can type a new name of the duplicated configuration.

#### Rename

Displays the [New Configuration Name](#) dialog in which you can type a new name of the selected configuration.

#### Remove

Removes the configuration file from disk. It is not possible to remove the default CLARITY.CFG and the BACKUP.CFG file.

#### Details

Displays the [Configuration Details](#) dialog in which you can see the actual configuration of the **Clarity** Instruments saved in the \*.CFG file.



**Instrument 1 (..4) ④**

Enables you to set parameters and behavior of each instrument in the selected configuration.

**Open Instrument**

If checked, the **Instrument** will be opened after the start of **Clarity**. This option has special feature if used in combination with the *<Last Used>* option in the *Configuration* combo box. See the description of this option above or the chapter "**Examples of using the Launch Manager**" on pg 8.

**Login User Name**

Sets the predefined Login Name for opening the **Instrument**.

**Desktop**

Select the desktop you want to load on the **Instrument**. List of Desktop files (.DSK files) is retrieved from the Clarity installation directory (C:\CLARITY\CFG).

**<From .PSW or Clarity.DSK>**

After opening the Instruments, loads the Desktop Configuration from the .PSW or CLARITY.DSK file.

 **button**

Displays the popup menu for operations with the Desktop files. You can also access this popup menu by right clicking on the *Desktop* combo box.

**Add**

Displays the **Open** dialog in which you can select the Desktop file you want to be opened on the **Instrument**.

**Duplicate**

Displays the **New Desktop Name** dialog in which you can type a new name of the duplicated Desktop file.

**Rename**

Displays the **New Desktop Name** dialog in which you can type a new Desktop name.

**Delete**

Removes the Desktop file from disk.

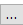
**Project**

Sets the project on the opened instrument.

**<From Desktop>**

Sets the Project on the Instrument which is saved in the selected desktop above. If there is not selected the *<From .PSW or Clarity.DSK>* option, then the desktop name is displayed.

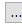
**Method**

Sets the **Method** on the opened **Instrument**. List of Method files (.MET) is retrieved from the project folders in the **Clarity** installation directory. By using the  button you can specify the custom location of the file.

**<From Project>**

Sets the Project on the Instrument which is saved in the selected desktop above.

**Sequence**

Sets the **Sequence** on the opened **Instrument**. List of Sequence files (.MET) is retrieved from the project folders in the **Clarity** installation directory. By using the  button you can specify the custom location of the file.

**<From Project>**

Sets the Sequence loaded on the Instrument which is saved in the selected desktop above.

**Refresh Files**

Refreshes the list of files displayed in the [Edit Profiles](#) dialog.

## 2.2.1 Configuration Details

This dialog displays detailed information about the configuration of the Instruments in the **Clarity** Configuration.

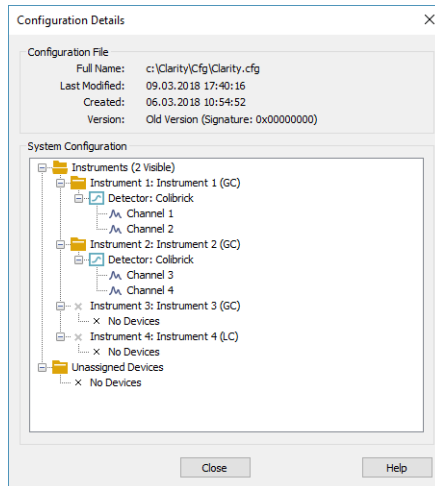


Fig 4: Configuration Details dialog

### Configuration File

#### Full Name

Full path to the configuration file.

#### Last Modified

Date of last modification of the configuration.

#### Created

Date of creation of the configuration file.

#### Version

Information about **Clarity** version.

### System Configuration

Lists the assigned Hardware and Control Modules to the **Instruments 1** (..4).

# 3 Examples of using the Launch Manager

This chapter describes some cases in which can **Launch Manager** simplify your work with **Clarity**.

## HPLC with various detectors or pumps combinations

*Description:* In some cases users need to modify the HPLC configuration for different types of analysis. For example they intend to use a detector for one type of analysis and another type of detector for a different set of analyses. The problem is, that the same instrument, for example a pump, cannot be configured on two **Clarity Instruments**.

*Solution:* In **Clarity Configuration**, set up the first combination of the HPLC. Close **Clarity** and start **Launch Manager**. In the **Edit Profile** dialog, duplicate the *Default* profile and name it, for example, *HPLC 1*. In the duplicated profile, duplicate the **Clarity** configuration file CLARITY.CFG and set which **Instrument** to open after start of **Clarity**. Now duplicate the *Profile* the *Configuration* again to prepare it for the second configuration. Close **Edit Profiles** dialog and launch **Clarity** with *HPLC 2* profile. Adjust the HPLC instruments to the second configuration you intend to use in this profile and set it also in the **Clarity Configuration**. From now on you can start both of HPLC configurations from **Launch Manager**.

*Note:* If you start **Clarity** from **Launch Manager** with a profile which has different configuration file than the current running instance of **Clarity**, then **Clarity** will be restarted to apply the new configuration.

## Using different Methods or Sequences on the same Instrument

*Description:* Applicable if users are often using multiple methods on the same **Clarity Instrument** and they require different settings of calculations, user columns or result table amounts.

*Solution:* You can simply create two profiles in **Launch Manager - Edit Profiles** dialog. In both profiles, set the <Last Used> option for *Configuration*. Then check the *Open Instrument* checkbox in the respective **Instrument 1** (..4). Predefine the Login User Name and set *Desktop*, *Project*, *Method* or *Sequence*. After that, if you start **Clarity** with the *Profile* from **Launch Manager**, the respective **Instrument** will be automatically opened using preloaded Instrument settings.

*Note:* In this example, **Clarity** will not be restarted, because you use the same **Clarity Configuration** file. Just the respective **Instrument** will be reopened.

## 4 Clarity configuration files

Here you can find the list of files in which **Clarity** stores various settings and you can work with these files in the **Launch Manager**.

### <Clarity>.cfg

Besides the hardware configuration, this file also stores information about the last user logged to a specific instrument and the custom instrument pictures used in the main **Clarity** window.

### <username>.dsk

Contains information about the last used project \*.PRJ and individual user preferences (windows configurations and layout, tables and graph preferences, user columns etc.). The CLARITY.DSK file from the PGM subfolder on the installation USB is copied during installation and used as a template for the \*.DSK files of newly created users.

### <project>.prj

This file stores information about the project subdirectories (the project directory has the same name as the project's \*.PRJ file) and the last used method, sequence, SST method and chromatograms.

### <method>.met

This file contains the Method, Calculations, Integration and other properties set on the **Clarity Instrument**.

### <sequence>.seq

Contains a sequence table and its settings.