

Quick guide adding a new configuration PurityChrom® 6

Files containing configuration information for PurityChrom® 6 always carry the file extension .p6c. You have to add the file to the file directory C:\ProgramData\PurityChrom6. By default, this directory is hidden. In order to make it visible enable "Hidden items" in your Windows settings as follows:

- Under Windows 11, locate the "View" button in the upper icon panel of your Windows file explorer.
- Open the drop-down menu, select "Show" to open another drop-down menu and click on "Hidden items" (see Fig. 1).

The "ProgramData" file directory is now visible.

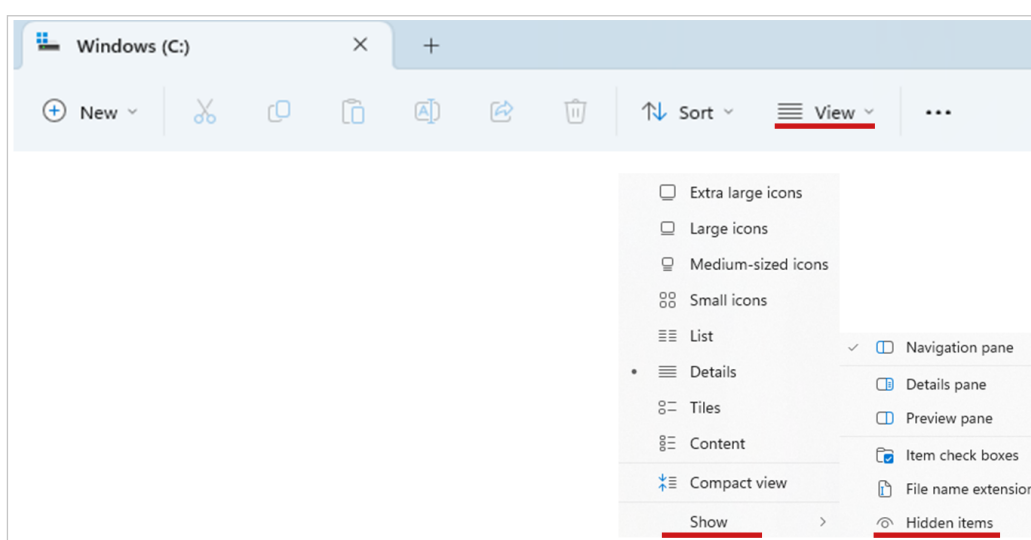


Fig. 1: Windows 11, file explorer

Now add the configuration file by copying it inside the folder and start the PurityChrom® 6 software. The added configuration should be visible in the Configuration part.

- Select the new configuration in the Configuration panel and select the menu point "General".

A text outlined in red will notify you that the data directory does not exist. By default, a data directory path will be displayed. We recommend to use this path. If you want to change that path, we recommend to use C:\ProgramData\PurityChrom6 as data directory.

- Choose a data directory and press "Create" inside the text field outlined in red (see Fig. 2).

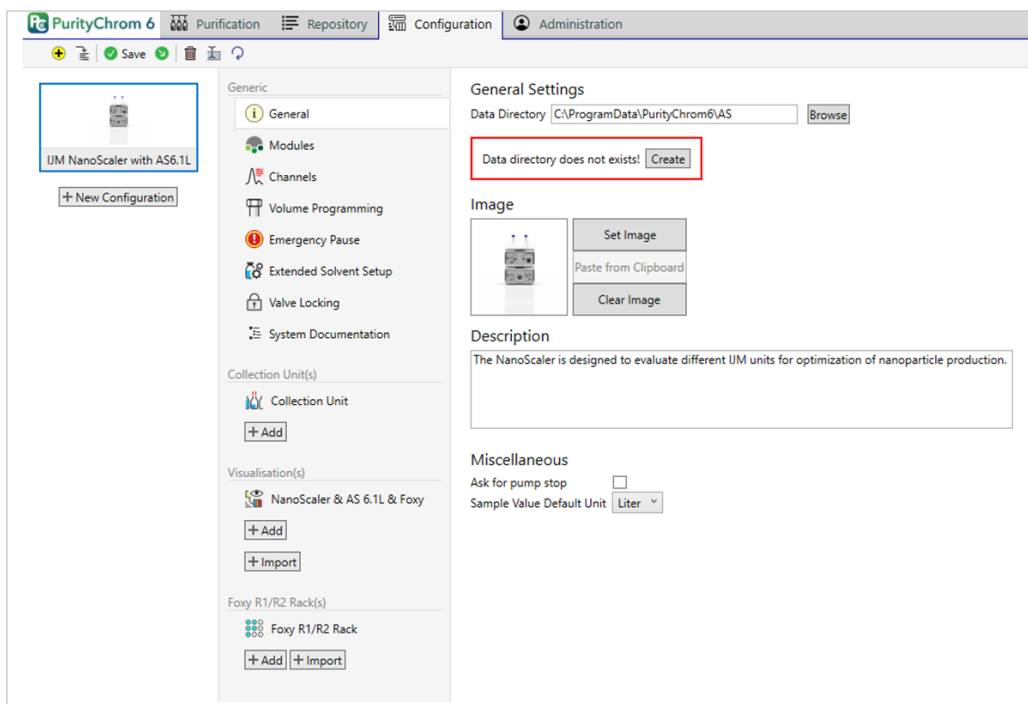


Fig. 2: Directory path for the new configuration

The red outlined text field will disappear and you are ready to use your new configuration.



Note: Each configured system needs to have its own data directory.

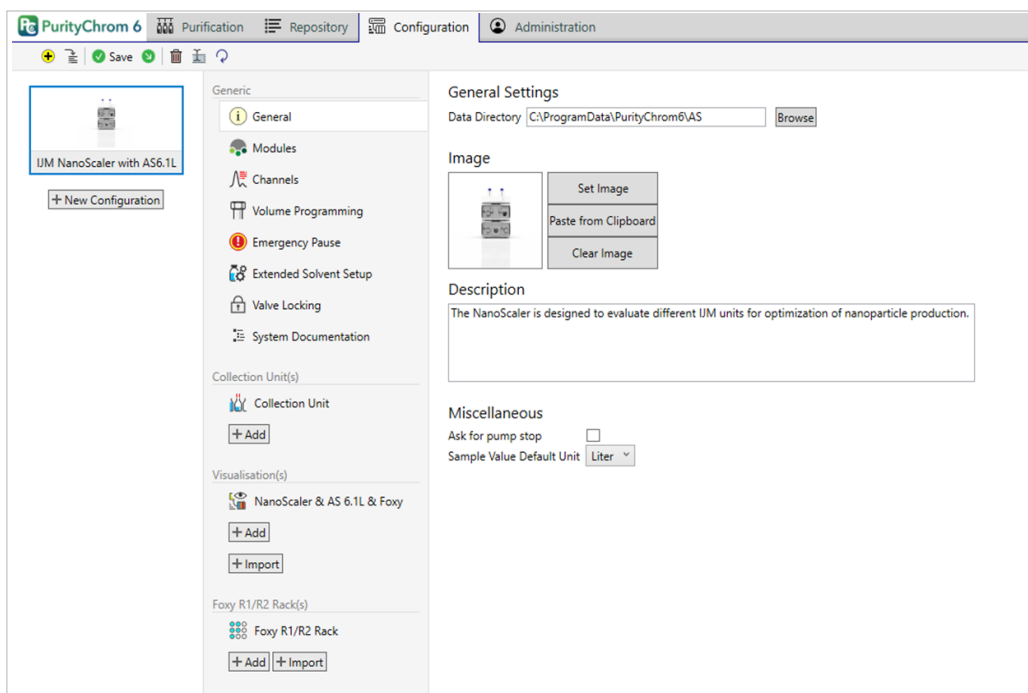


Fig. 3: Configuration with set data directory path

If you update or change an already existing configuration (e.g. because of a change of the connected system), it might be necessary to re-configure the displayed data channels.

- To check if that is necessary, switch to the Purification part of the PurityChrom® 6 software.
- An error in the added configuration will be displayed with a red cross and a message stating which channel is missing.
- Switch back to the Configuration part and choose the menu point “Channels”.
- Locate the channels mentioned in the error notification in the Purification part, select the name of the channel (see Fig. 4) and remove it by pressing the delete button on your keyboard.

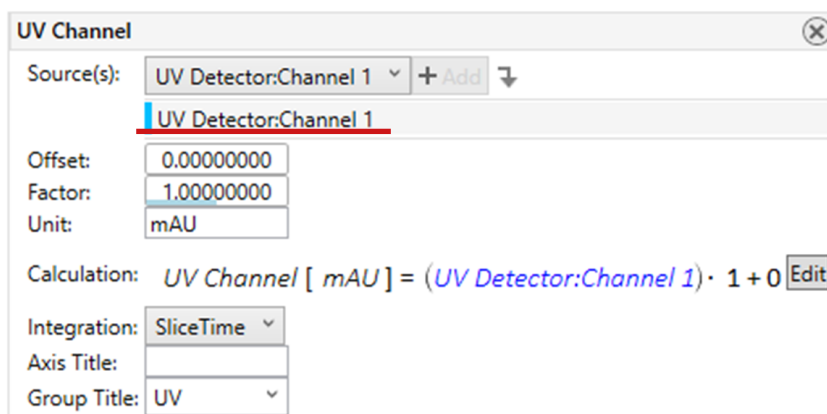


Fig. 4: Configuration of data channels

The channel will now notify you that no reference has been added (see Fig 5, left).

- To add a reference, open the drop-down menu beside “Source(s)” and select the channel. Even if the channel name in the drop-down menu has not changed, the connection to the configuration file will be newly established.
- After selecting the channel, press the add button, and the channel is usable again (see Fig. 5, right).

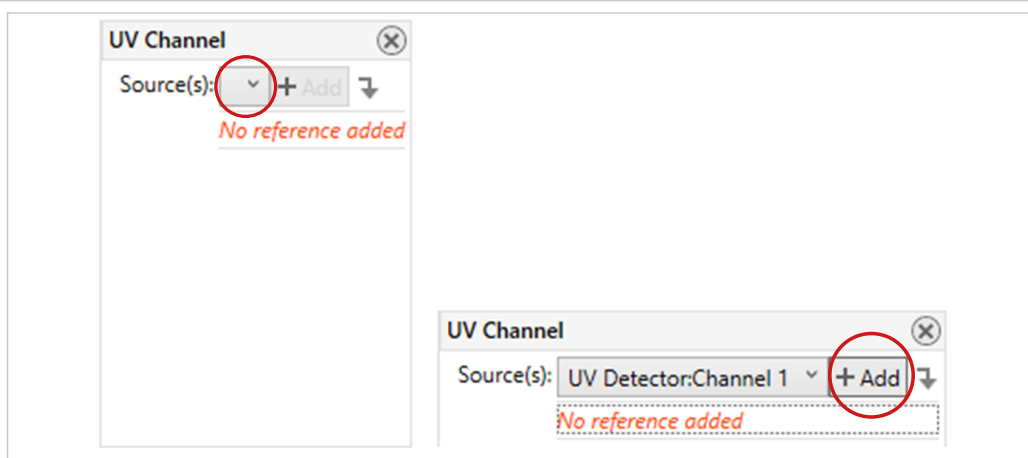


Fig. 5: Channel without selected source (left) and with selected source (right)

- Save your changed configuration via the “Save” button in the upper menu bar of the Configuration part.