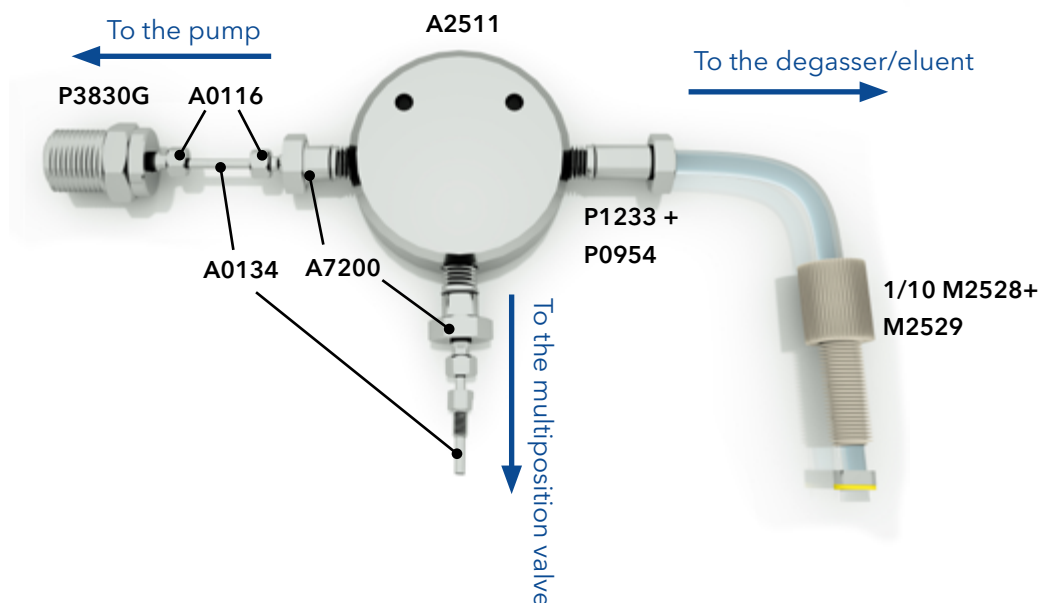


Recycling kit for AZURA® Pump P 6.1L

The recycling kit can be used to convert the AZURA® P 6.1L isocratic or HPG for peak recycling. Connect the parts as shown in the figure below:



To install the recycling kit, proceed as follows:

Disconnection of the inlet tube to the pump:

1. Remove the fitting of the pump head inlet (see AZURA P 6.1 L manual) together with the attached inlet tube.
If you have the HPG version of the AZURA P 6.1L, remove the pump head inlet of pump A.

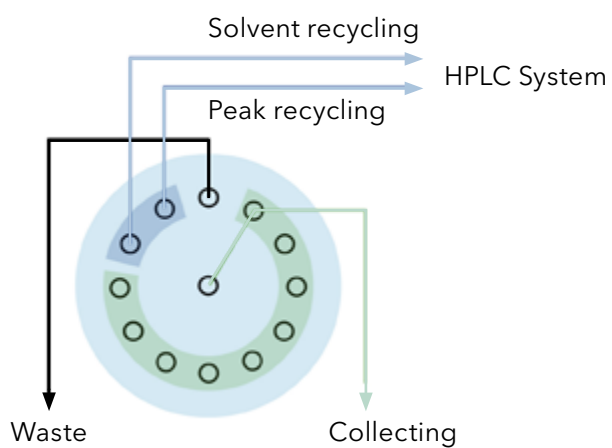
Note: In case you have an AZURA P 6.1L with degasser, also remove the fitting on the outlet side of the degasser for pump A.

Installation of the recycling kit:

1. Connect the outlet bushing P3830G with the pump head inlet. Therefore, follow the instructions to undo and tighten of the pump head inlet fitting as described in the pump manual.

Note: When installing the kit at an HPG pump, the kit has to be connect to pump A.

2. Connect the stainless-steel capillary with the last but one port of the fraction valve according to the figure below:



3. Insert the tube in the eluent bottle.

Note: If you have a pump with degasser, connect the flat bottom fitting (M2528 and M2529) with the degasser outlet for pump A.