

# LC-FLD analysis of 4 PAHs in olive oil samples using AZURA® GPC Cleanup System



Federica Massari\*\*, Juliane Boettcher\*, Kate Monks\*, Pietro Cotugno\*\*, Carlo Zambonin\*\*, applications@knauer.net

\*KNAUER Wissenschaftliche Geräte GmbH, Hegauer Weg 38, 14163 Berlin; www.knauer.net

\*\* Department of Chemistry, University of Bari "Aldo Moro", Via Orabona, 4, 70126 Bari, Italy.

## SUMMARY

The aim of this work is to perform the cleanup of olive oil samples before HPLC analysis by means of the AZURA GPC Cleanup System. The GPC-LC-FLD method is very useful to identify and quantify Benzo(a)pyrene and the sum of four Polycyclic Aromatic Hydrocarbons, PAHs, in olive oils according to Commission Regulation (EU) No 835/2011.

## INTRODUCTION

Polycyclic aromatic hydrocarbons (PAHs) are environmental pollutants, characterized by their hazardous carcinogenic and mutagenic potential [1]. PAHs are ubiquitous compounds, since they can be found not only in all different environmental media (such as air, soil, and water), but also in various foods we encounter in our everyday life [2]. Humans are exposed to PAHs by various pathways. While for smokers the contribution from smoking may be significant, for non-smokers the major route of exposure is the consumption of food, so the dietary intake of PAHs poses the potential health hazards to the public. Food can be

contaminated from environmental sources, industrial food processing and from certain home cooking practices. The presence of PAHs in vegetable oils is generally explained by the combination of many factors and processes including the drying process of the oil seeds (with the combustion of gases), contamination during solvent extraction, packaging material, soil burn [1]. Due to their demonstrated carcinogenic and mutagenic activity, they have been largely investigated. A great effort has been devoted to the improvement of the analytical method to determine such compounds in complex samples, such as food.

## RESULTS

To validate the analytical method correlation coefficient R<sup>2</sup>, limit of detection and quantification were calculated. The limits of detection (LODs) and of quantification (LOQs) were calculated by the standard deviation of six calibration solutions at a concentration level equal to the lowest calibration level, an approach does not take into account the matrix effect, on the basis of Regulation (EU) No 836/2011. However they are lower than the limit values namely 2.0 µg/kg and 10.0 µg/kg for BaP and PAH4 respectively (Regulation (EU) No 835/2011). The precision of the method was investigated at 0.1 µg/L (BaA, Chry, BaP), 0.2 µg/L (BbF) by performing replicate measurements

(n=3) for 3 days, to estimate the within-day and between-days precision, which was found always lower than 5%. Recoveries were calculated by a spiked olive oil sample (sample 4, organic origin) at concentration levels of 3.3 µg/L (BbF), 1.6 µg/L (BaA, Chry, BaP). Good recoveries were obtained for 4 PAHs, according to Regulation (EU) No 836/2011 [5]. All these parameters are listed in (Tab A2 additional results). Fig 1 and Fig 2 show respectively LC-FLD chromatograms of a standard solution and of a spiked purified oil sample. Quantification results of LC-FLD analysis of the selected samples are reported in Tab. 1.

Tab. 1 Quantification results from LC-FLD analysis of four olive oil samples

Analyte	Cal range (µg/L)	R <sup>2</sup>	LOD (µg/L)	LOQ (µg/L)	RSD %	% recovery mean
Benzo(a)anthracene	0.1 - 10.0	0.9994	0.01	0.04	2.98	100 ± 3
Chrysene	0.1 - 10.0	0.9995	0.02	0.06	4.13	100 ± 4
Benzo(b)fluoranthene	0.2 - 20.0	0.9995	0.04	0.13	3.15	60 ± 5
Benzo(a)pyrene	0.1 - 10.0	0.9989	0.02	0.06	4.63	60 ± 5

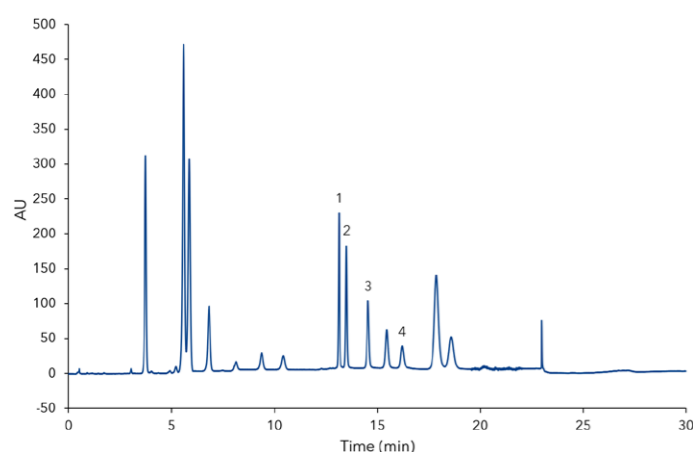


Fig. 1 LC-FLD chromatogram of a standard solution of PAHs at the concentration levels of 5 µg/L (1) BaA, 2) Chry, 4) BaP) and 10 µg/L (3) BbF), respectively

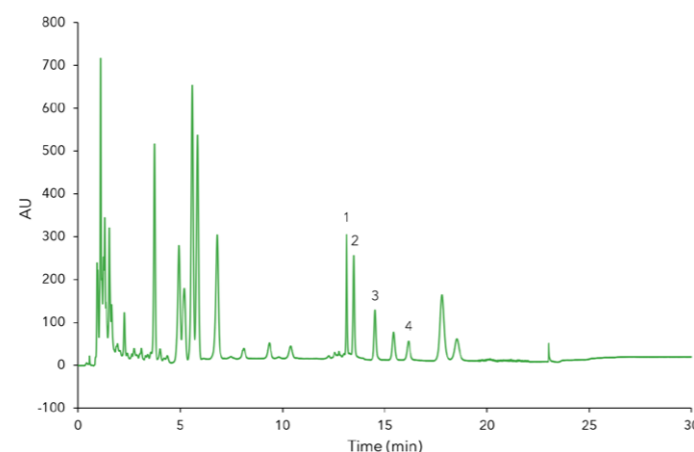


Fig. 2 LC-FLD chromatogram of a spiked and purified oil sample: 1) BaA; 2) Chry; 3) BbF; 4) BaP

## REFERENCES

- [1] Vasudha Bansal, Ki-Hyun Kim. Environment International 84 (2015) 26-38
- [2] Moon, H.B., Kannan, K., Lee, S.J., Ok, G., 2006. Arch. Environ. Contam. Toxicol. 51, 494-502

## MATERIALS AND METHODS

150 mg of each oil sample were diluted with the mobile phase for GPC, Cyclohexane:DCM, 70:30 (v/v), to a volume of 2 mL. Then the mixture was thoroughly mixed using an ultrasonic bath for few seconds. Filtration with a PTFE syringe filter with a pore size of 0.45 µm was necessary before GPC cleanup. After calibrating the system using GPC calibration mixture, the sample cleanup could be performed. 2 mL of each olive oil sample were loaded into the GPC loop with the following procedure: firstly the injection valve was set to load position and the column bypass valve to load position. Secondly, each loop was rinsed with GPC

mobile phase before sample loading and thereafter all tubings were emptied by injecting air with a syringe. Next, the sample was loaded through the injection port and the two sample loop valves were switched to the next position in order to close the loop. The procedure was repeated for each sample and finally the injection valve was set to inject position to start sequence running. Each purified sample is collected by switching of the fractionation valve automatically. After the cleanup, samples were concentrated under nitrogen stream, reconstituted in mobile phase for the HPLC analysis and fluorescence detection.

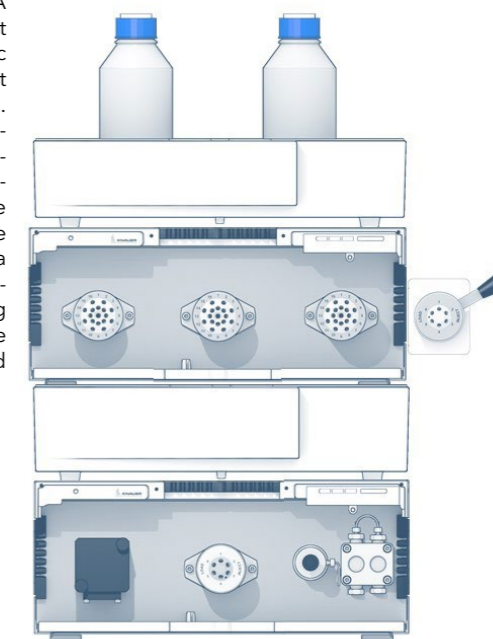
## CONCLUSION

AZURA® GPC Cleanup system is a useful tool for a fast sample pre-treatment of olive oil samples before LC analysis with fluorescence detection. The GPC clean-up method represents a very important preliminary step for the determination of 4 PAHs recognized for their demonstrated carcinogenic and mutagenic activity. Benzo(a)pyrene was not present in all analyzed samples. Moreover, all analyzed samples show a PAHs content lower than that required from the Reg. 835/2011 as the sum of the four PAHs results to be always lower than 10.0 µg/kg.

## REGULATIONS

The Scientific Panel on Contaminants in the Food Chain (CONTAM Panel) of EFSA adopted an opinion on Polycyclic Aromatic Hydrocarbons in Food suggesting that benzo(a)pyrene is not a suitable marker for the occurrence of polycyclic aromatic hydrocarbons in food and that a system of four specific substances (PAH4) or eight specific substances (PAH8) would be the most suitable indicator of PAHs in food. Then, Commission Regulation (EU) No 835/2011 of 19 August 2011 amending Regulation (EC) No 1881/2006 required that new maximum levels for the sum of four substances, PAH4 (Benzo(a)pyrene, BaP, Benzo(a)anthracene, BaA, Benzo(b)-fluoranthene, BbF and Chrysene, Chry) should be introduced, whilst maintaining a separate maximum level for benzo(a)pyrene [3, 4]. The maximum levels for Benzo(a)pyrene and PAH4 are respectively 2.0 µg/kg and 10.0 µg/kg in oils and fats (excluding cocoa butter and coconut oil) intended for direct human consumption or use as an ingredient in food. Commission Regulation (EU) No 836/2011 of 19 August 2011 amending Regulation (EC) No 333/2007 established the sampling method and analysis for the official control of the levels of lead, cadmium, mercury, inorganic tin, 3-MCPD and benzo(a)pyrene in foodstuffs [5].

- [3] Commission Regulation (EC) No 1881/2006 of 19 December 2006 setting maximum levels for certain contaminants in foodstuffs.
- [4] Commission Regulation (EU) No 835/2011 of 19 August 2011 amending Regulation (EC) No 1881/2006 as regards maximum levels for polycyclic aromatic hydrocarbons in foodstuffs.
- [5] Commission Regulation (EU) No 836/2011 of 19 August 2011 amending Regulation (EC) No 333/2007 laying down the methods of sampling and analysis for the official control of the levels of lead, cadmium, mercury, inorganic tin, 3-MCPD and benzo(a)pyrene in foodstuffs.



## ADDITIONAL RESULTS

**Tab. A1** Different analytical parameters for the analytical method according to Regulation (EU) No 836/2011

Parameter	Criterion
LOD	≤ 0.30 µg/kg for each of the four substances
LOQ	≤ 0.90 µg/kg for each of the four substances
Recovery	50 - 120 %

**Tab. A2** R2, LOD and LOQ, RSD %, % recovery mean

Analyte	Concentration (µg/kg)			
	Sample 1	Sample 2	Sample 3	Sample 4
Benzo(a)anthracene	< LOD	2.7	< LOD	< LOD
Chrysene	4.3	6.1	2.3	1.3
Benzo(b)fluoranthene	< LOD	< LOD	< LOD	< LOD
Benzo(a)pyrene	< LOD	< LOD	< LOD	< LOD
PAH4	4.3	8.8	2.3	1.3

## ADDITIONAL MATERIALS AND METHODS

**Tab. A3** GPC Method parameters

Eluent			
Gradient	isocratic		
Flow rate	1 mL/min	System pressure	35 psi
Run temperature	RT	Run time	60 min
Injection volume	2 mL	Injection mode	Full loop
Detection wavelength	254 nm	Data rate	10 Hz
Collect time	18-48 min	Time constant	0.1 sec

**Tab. A5** System configuration & data

Instrument	Description	Article No.
AZURA GPC Cleanup System		-
Pump	AZURA P 6.1L	<a href="#">APH35ED</a>
Autosampler	AZURA AS 6.1L	<a href="#">AAA01AA</a>
Detector	AZURA DAD 6.1L	<a href="#">ADC11</a>
Detector	Fluorescence Detector RF-20 A	<a href="#">A59200</a>
Thermostat	AZURA CT 2.1	<a href="#">A05852</a>
Column (GPC)	Glass column 450 mm length x 10 mm ID. Bio-Beads S-X3 resin	
Column (HPLC)	Nucleosil 100-5 C18 PAH, 150 x 4 mm ID with precolumn	<a href="#">15DE420NSJ</a>
Software (GPC)	Mobile Control Chrom with tablet	<a href="#">A9608</a>
Software (HPLC)	ClarityChrom 7.4.1 - Workstation, autosampler control included	<a href="#">A1670</a>

**Tab. A4** HPLC Method parameters and detection settings

Eluent A	Water		
Eluent B	Acetonitrile		
Gradient	Time (min)	% A	% B
	0	40	60
	11	25	75
	12	0	100
	22	0	100
	22.02	40	60
	30	40	60
Flow rate	1.2 mL/min	System pressure	150 bar
Column temperature	20°C	Run time	30 min
Injection volume	10 µL	Injection mode	Partial loop
<b>FLD Detection</b>	<b>Excitation and Emission wavelength settings</b>		
<b>Time</b>	<b>Ex. (nm)</b>	<b>Em. (nm)</b>	
0	270	330	
5.0	270	330	
6.0	250	370	
8.0	330	430	
12.0	270	390	
13.90	370	460	
16.50	290	405	
19.50	246	503	
22.0	270	330	
	Data rate (Hz)	5	
	Time constant	0.1	
UV Detection	Detection (nm)	254	
	Data rate (Hz)	20	
	Time constant (s)	0.05	

## RELATED KNAUER APPLICATIONS

**VFD0152** - GPC cleanup of olive oil samples