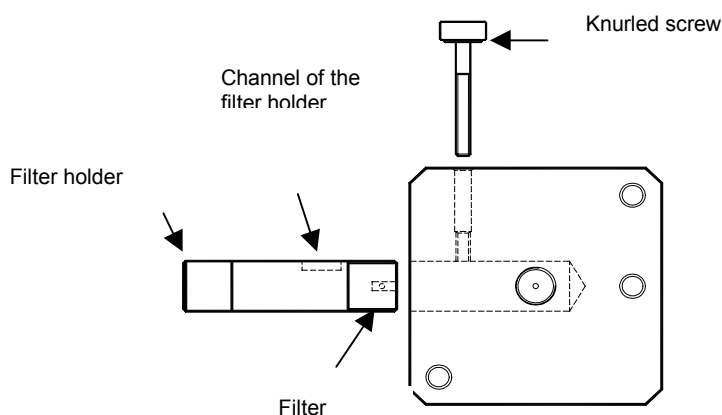


Instructions

Holmium Oxide Test Cells

A4126 / A4127 / A4128



The wavelength accuracy of a UV detector is a very important feature for a high performance operation. It is important to select a well-defined independent device for reliable results.

Holmium Oxide is a glass with characteristic absorption maxima in the range of 250 – 600 nm.

The supplier of the glass adds a certificate to the delivery of the glass showing the exact absorption maxima. Just by comparison of measurements of the detector with the certificate of the Holmium Oxide filter the accuracy can be determined.

The Holmium Oxide Test Cell has a bore where the removable filter holder with the filter is placed. The holder can be fixed by a small screw. It is important that the screw fits into the channel of the filter holder. The serial number of the glass (important for tracking down the batch number of the glass) is printed into the holder.

Determination of the wavelength accuracy

Record an AUTOZERO spectrum without Holmium Oxide Filter, by pulling it out a few mm. Insert the filter and record an absorption spectrum.

The test flow cell can operate with the following Knauer UV detectors:

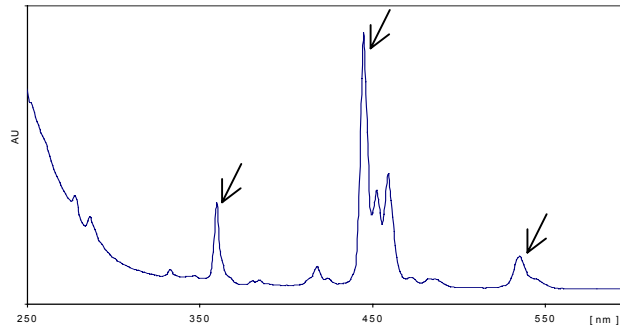
WellChrom Spectrophotometer K-2501 (A4180 u. A4210)

WellChrom Fast Scanning Spectrophotometer K-2600 (A4070 u. A4090)

WellChrom Diode Array-Detector K-2700 (A41121)

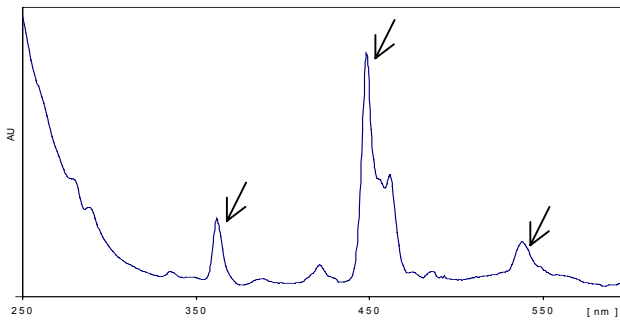
K-2700

Determination of three marked maxima out of the spectrum (see fig.). The determined positions/ wavelengths should coincide with those in the test certificates. The deviation shall not exceed **2 nm**.



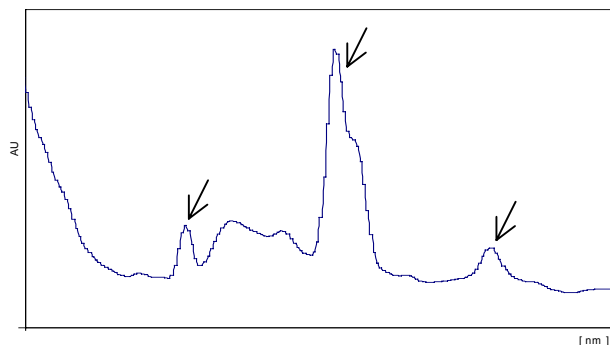
K2600

Determination of three marked maxima out of the spectrum (see fig.). The determined positions/ wavelengths should coincide with those in the test certificates. The deviation shall not exceed **3 nm**.



K-2501

Determination of three marked maxima out of the spectrum using the 0 Hz scan (see fig.). The determined positions/ wavelengths should coincide with those in the test certificates. The deviation shall not exceed **5nm**.



Order Information

- A4126 Holmium Oxide Test Cell, regular
- A4127 Holmium-Oxide Test Cell with one fiber optical connector (DAD)
- A4128 Holmium-Oxide Test Cell with 2 fiber optical connectors